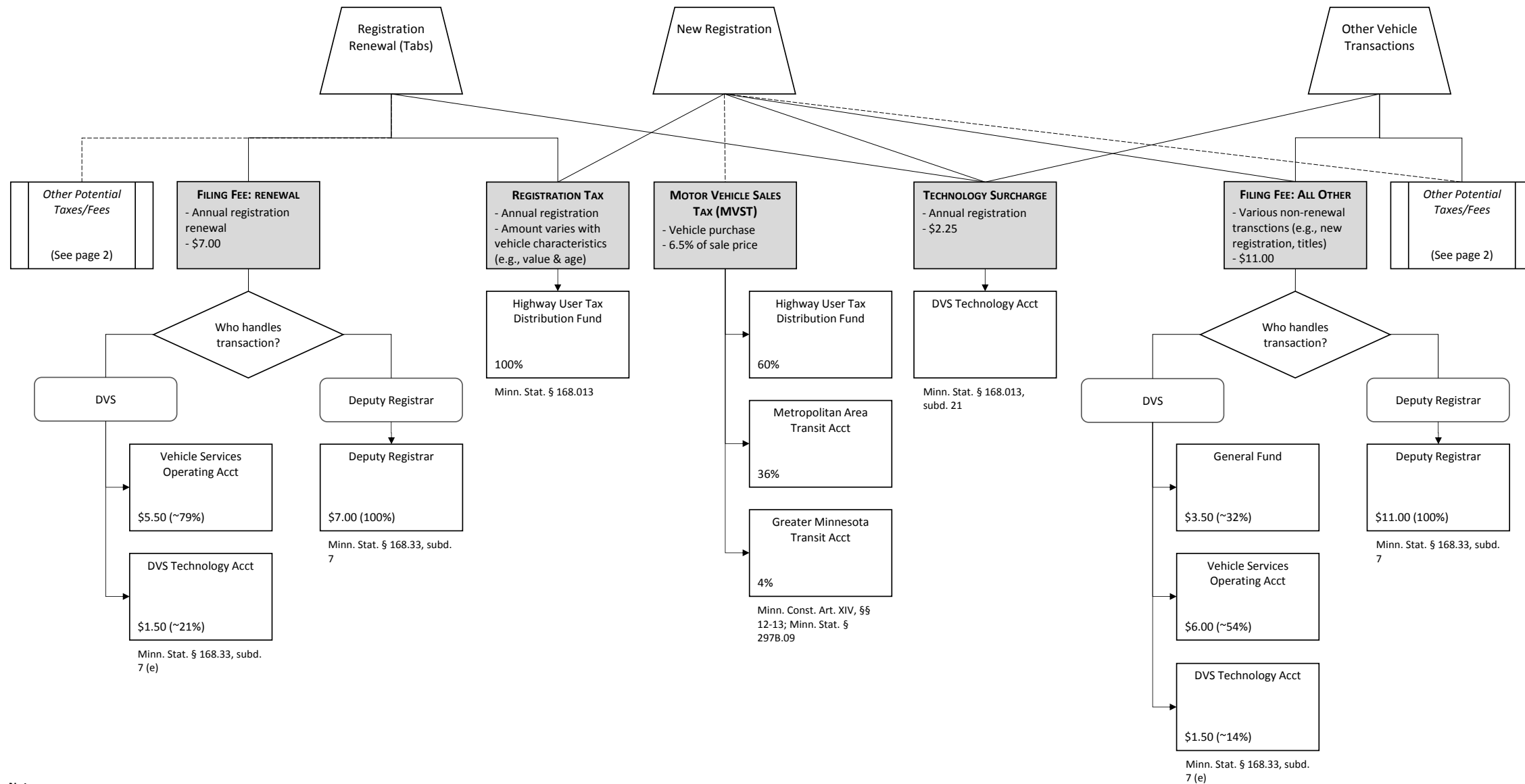


Motor Vehicle Taxes & Fees Flow

Partial Summary (not comprehensive for all scenarios)



Notes
 "DVS" refers to Driver and Vehicle Services
 Chart excludes various fees and transaction scenarios, such as for exempt vehicles, expedited service, trailer registration, late penalties, and special plate contributions
 Chart does not show other state sales taxes (general sales tax on motor vehicle leases, rental sales tax, and general sales tax on automotive parts)

Other Potential Taxes/Fees
- Partial list
(See page 1)

