



# EMPOWERING SMALL MINNESOTA COMMUNITIES



UNIVERSITY OF MINNESOTA  
Driven to Discover<sup>SM</sup>

## House Bill 2499/Senate Bill 2650

Representatives Koegel, Curran, Smith; Senators Carlson, Fateh, and Dibble

Carried forward in the Omnibus Transportation Bill

“...to provide support and technical assistance to small communities on infrastructure project analysis and development...including...consideration of sustainability, resiliency, and adaptation to the impacts of climate change; and...efficiencies through coordinated investments in other infrastructure or assets.”



UNIVERSITY OF MINNESOTA

Driven to Discover<sup>SM</sup>

**Our vision:** To help small Minnesota communities develop resilient infrastructure and strengthen their social, environmental, and economic fabric.



UNIVERSITY OF MINNESOTA  
Driven to Discover<sup>SM</sup>

**Our goal:** To work with small Minnesota communities on efforts that add value to the community, get more benefit from local and state investments, that are competitive projects for a wide range of future funding, and that add capacity to support small communities in pursuit of their goals.



UNIVERSITY OF MINNESOTA  
Driven to Discover<sup>SM</sup>



**The opportunity** is to access an unprecedented level of funding for infrastructure through the Federal Infrastructure Investment and Job Act (IIJA) and the Inflation Reduction Act (IRA) as well as various State programs.



UNIVERSITY OF MINNESOTA  
Driven to Discover<sup>SM</sup>

**Your community** is central to this program. You bring important expertise and assets that we are eager to work with, such as strong civic culture, committed leadership, and a vision for resiliency future



UNIVERSITY OF MINNESOTA  
Driven to Discover<sup>SM</sup>

## Key University partners:

- Extension's Regional Sustainable Development Partnerships
  - Minnesota Design Center
  - Resilient Communities Project/Center for Urban and Regional Affairs
  - Hubert H. Humphrey School of Public Affairs
  - Center for Transportation Studies
- 
- Researchers from across the system to be tapped for aid and experience in key efforts.



UNIVERSITY OF MINNESOTA

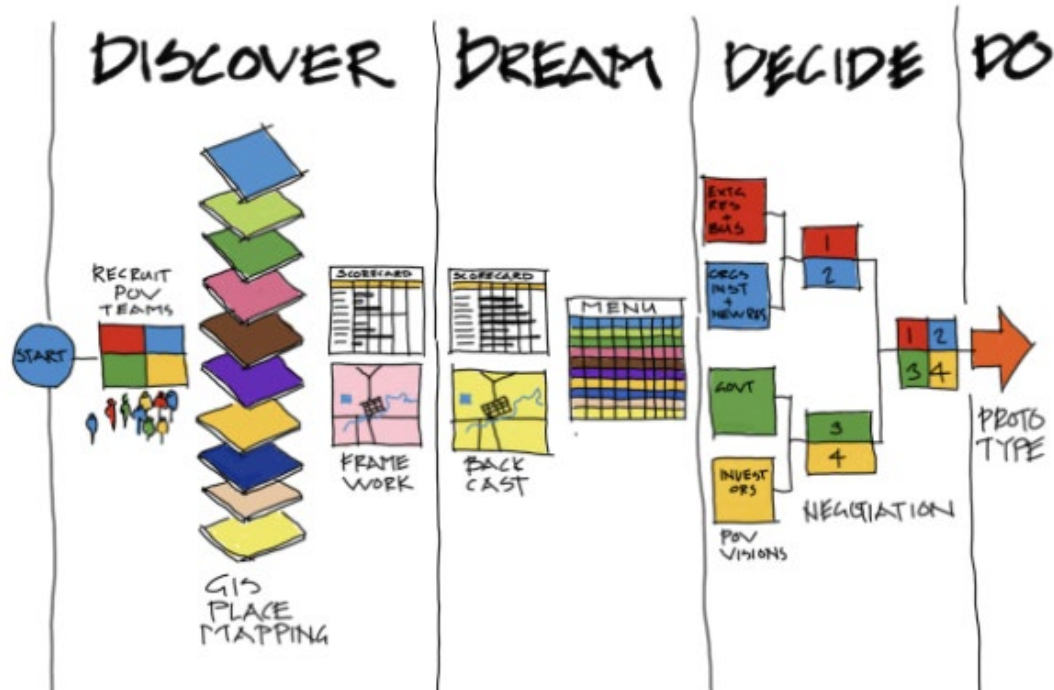
Driven to Discover<sup>SM</sup>



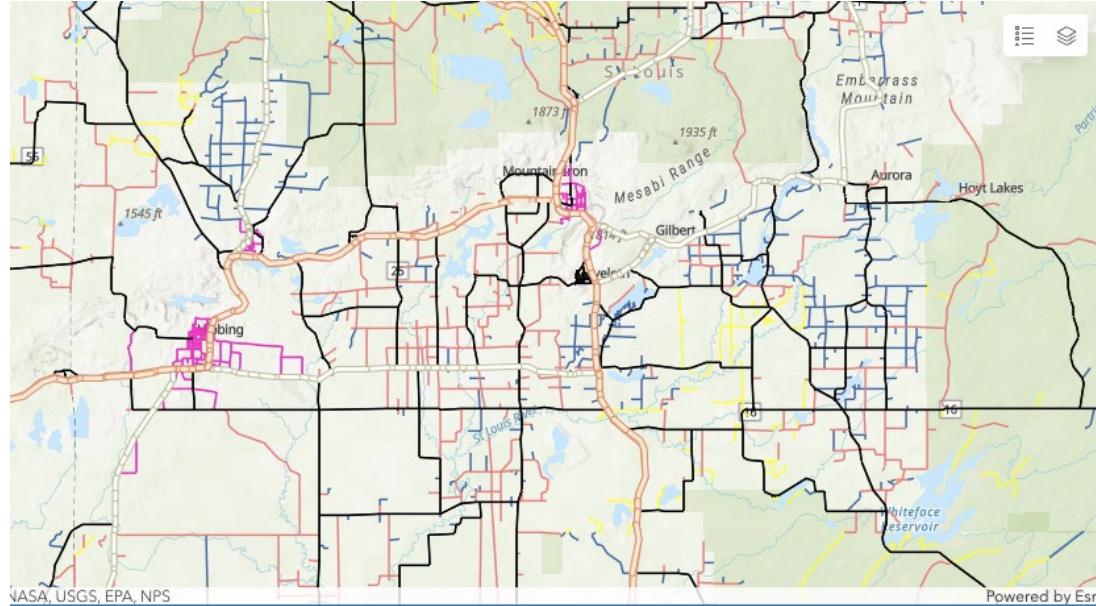
**Together**, we will do the work and projects that will strengthen your community



Work can range from (1) a rapid response to (2) a tactical action on a project to (3) community futures visioning with a community.



# 1. Rapid Response: 10-hour projects



UNIVERSITY OF MINNESOTA  
Driven to Discover<sup>SM</sup>

# 2. Tactical Action: Multiple months

No residential zoning in vicinity. Opportunity for TOD along bus corridor

No street furnishings/places to rest on the way to and from station

Destinations are made to be driven to and disconnected from Lake Street

Lacking tree canopy or greenery

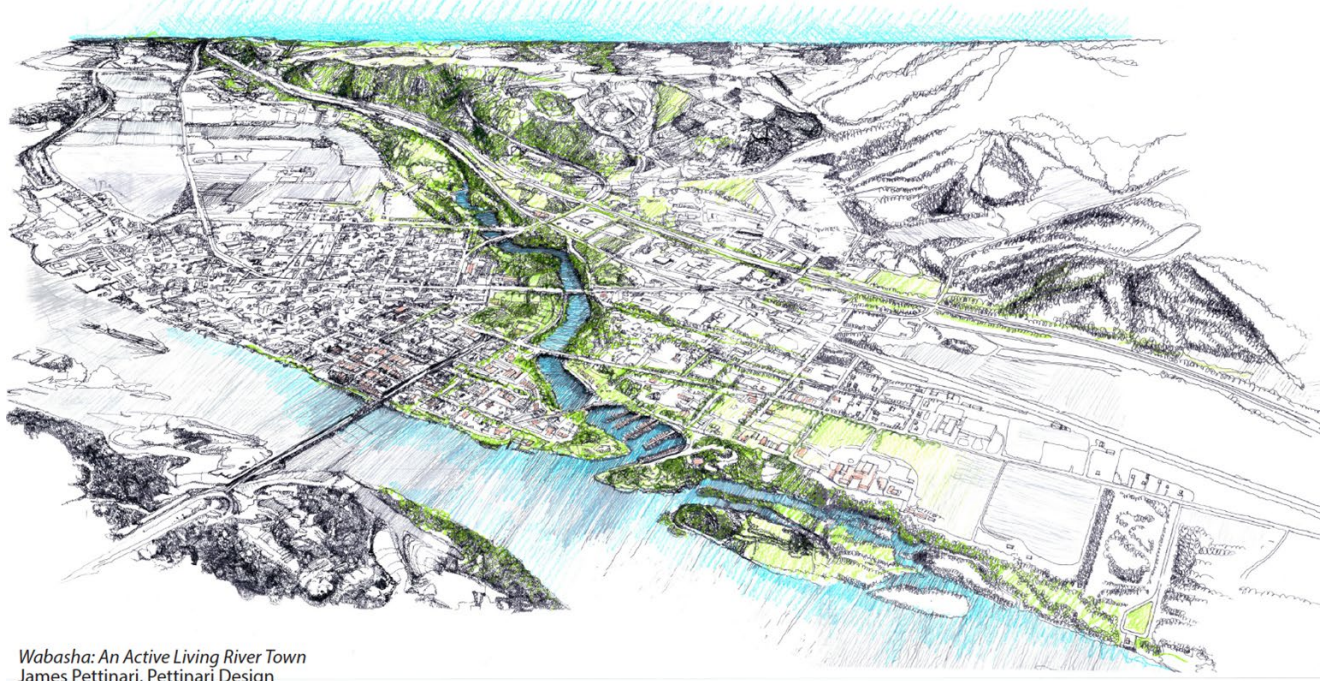
Not bike friendly. Biking to station would be difficult along Lake Street Artery.

Sidewalk is really thin, not much room for movement.

URBAN DESIGN		TRANSIT		INCLUDED	
	DENSITY		CAR PARK		TOD
	ZONING		BIKE PARK		GREEN SPACE
	LAND USE		ACCESSIBILITY		FURNISHING
	GREEN SPACE		INTERSECTION		DENSITY
	PCV		BIKE TRAIL		ZONING
	PLANTING		TRANSIT		STREET
	STREET LIGHTING		STATION		SIDEWALK
	FURNITURE		STREET		BIKE TRAIL
			SIDEWALK		



# 3. Community Futures: 9-12 months



*Wabasha: An Active Living River Town*  
James Pettinari, Pettinari Design



UNIVERSITY OF MINNESOTA  
Driven to Discover<sup>SM</sup>

# Discussion and Questions

Contact:  
Kyle Shelton, Director,  
Center for Transportation Studies  
[shelt169@umn.edu](mailto:shelt169@umn.edu)



UNIVERSITY OF MINNESOTA

Driven to Discover<sup>SM</sup>