

# METROPOLITAN COUNCIL TOUCH POINTS WITH LOCAL GOVERNMENTS

November 29, 2023

# Key Message

- Thinking of many is that cities are more impacted by Met Council actions and policy-making than counties
- This misperception needs to be addressed if Met Council governance changes in the future, and county representation is left out of the new model
- Counties, depending on responsibilities, have as much - if not more - interaction with Met Council than many cities

# Role of Metropolitan Council

## Strongest interactions with Counties:

- ▣ transportation
- ▣ parks and trails
- ▣ surface water mgmt.
- ▣ GIS
- ▣ future WWTP planning
- ▣ housing shelter/homeless
- ▣ Agricultural/ greenspace preservation
- ▣ rural density policies

## Strongest interactions with Cities:

- ▣ wastewater treatment
- ▣ MUSA expansions
- ▣ WAC/SAC fees
- ▣ drinking water mgmt.
- ▣ housing types /needs
- ▣ livable communities
- ▣ urban density policies
- ▣ plat monitoring

# County Touch Points



# County Touch Points - Transportation

- Council's Transportation Policy Plan (TPP) focuses on:
  - ▣ Principal and Minor Arterial System (primarily County or State Highways)
    - Traffic Volumes and Forecasts
    - System Connections
  - ▣ Transit System (primarily operated at a regional or county level; rarely at local level)
  - ▣ Regional Bicycle Transportation Network (primarily built and maintained at a regional or county level)
  - ▣ Freight System
  - ▣ Greenhouse Gas Discussions

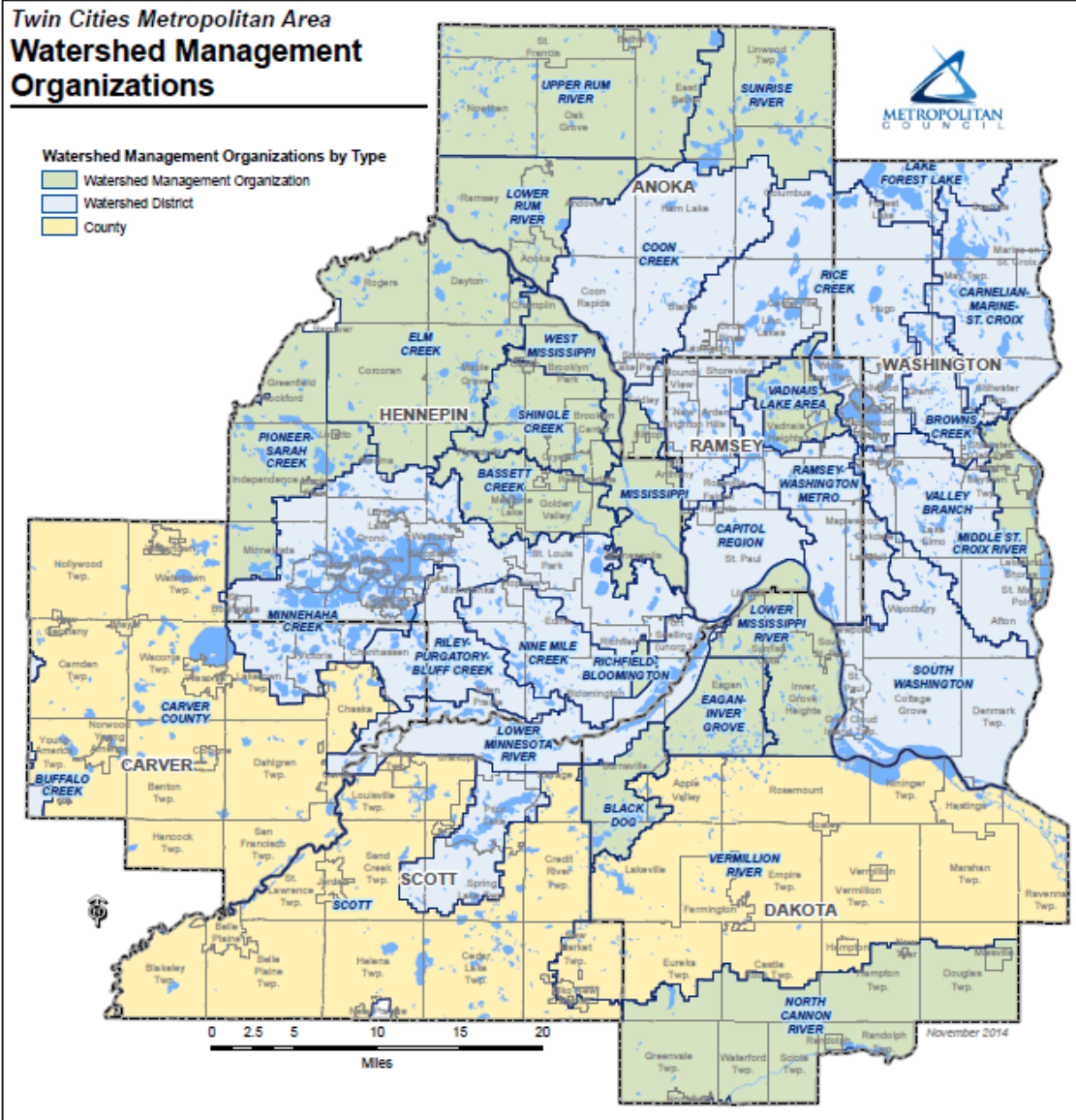
# County Touch Points – TAB/Met Council

- County Representative
  - ▣ Technical Committees – all 7 counties serve on all 3 committees (TAC, F&P, Planning)
- Solicitations
  - ▣ Principal and A minors – almost all County and State highways
  - ▣ Bridges – almost all County and State highways
  - ▣ Traffic – almost all County and State highways
- Approval of functional class changes

# County Touch Points - Parks and Trails

- Regional Parks Policy Plan
  - ▣ Policy framework for 10 regional park operating agencies
    - 6 Counties (Carver, Scott, Dakota, Washington, Anoka, Ramsey)
    - Bloomington, Minneapolis, St Paul
    - Three Rivers Park District – Hen County (+)
- Park and Trail Master Plans – approved by the Met Council
- Funding Allocation/Project Approval – State and Regional Bonds, Legacy, Environmental Trust Fund, State general fund
  - ▣ Capital Projects
  - ▣ Land Acquisition
  - ▣ Operational

# County Touch Points - Water Resources





# County Touch Points - Water Resources

- SW and South Metro areas are primarily County-based WMOs (Carver, Scott, Vermillion Joint Powers Org)
- Met Council interaction with WMOs
  - Technical studies
  - Technical assistance
  - Surface water monitoring
  - Watershed and local water plan reviews
- Increased Ground Water Discussions

# County Touch Points - Metro GIS

- Seven metro counties provide:
  - Parcels
  - Addresses
  - Street center lines
  - Property information
- Policy Board comprised of County Commissioners from 7 counties plus reps from 2 metro cities and 2 regional agencies

# County Touch Points - Land Use

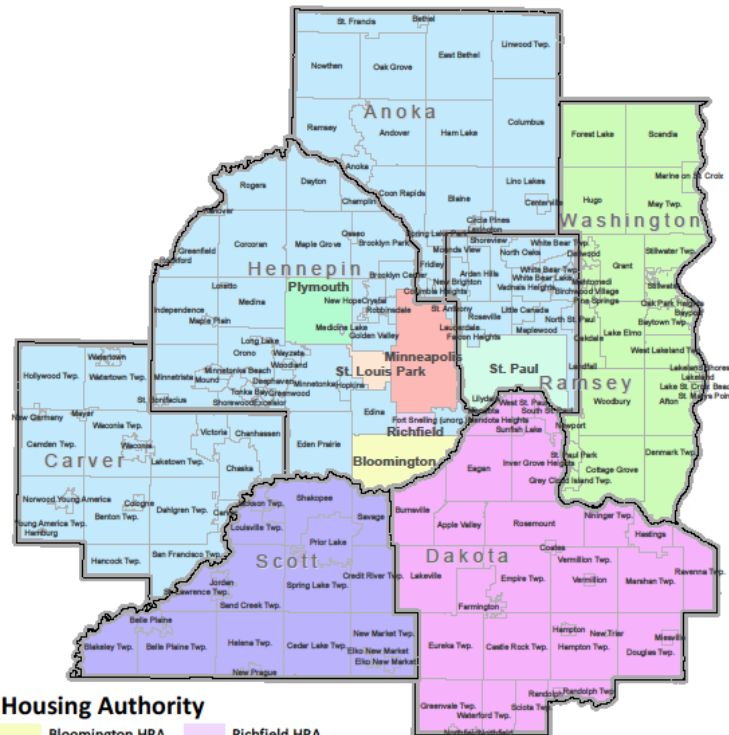
- County Land Use Plan
  - ▣ Rural densities consistent with Community Designation
  - ▣ Land Use Map changes require Council review
  - ▣ Cluster development regulations must be consistent with Council's Flexible Development Guidelines
- Regional Wastewater Planning
  - ▣ Future Wastewater Treatment Plants locations
  - ▣ Identifying Long Term Sewer Service Areas
- Ag Preserves Program – (primarily Counties)

# County Touch Points - Housing

- Homeless / Shelter Work
  - Cities look to Counties and/or County Community Development Agencies for Affordable Housing Supports
  - Regional share of low- to moderate-income housing
  - Emphasis in providing services which is all County

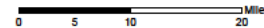
# County Touch Points - Housing

## Twin Cities Metropolitan Area Section 8 Programs



### Housing Authority

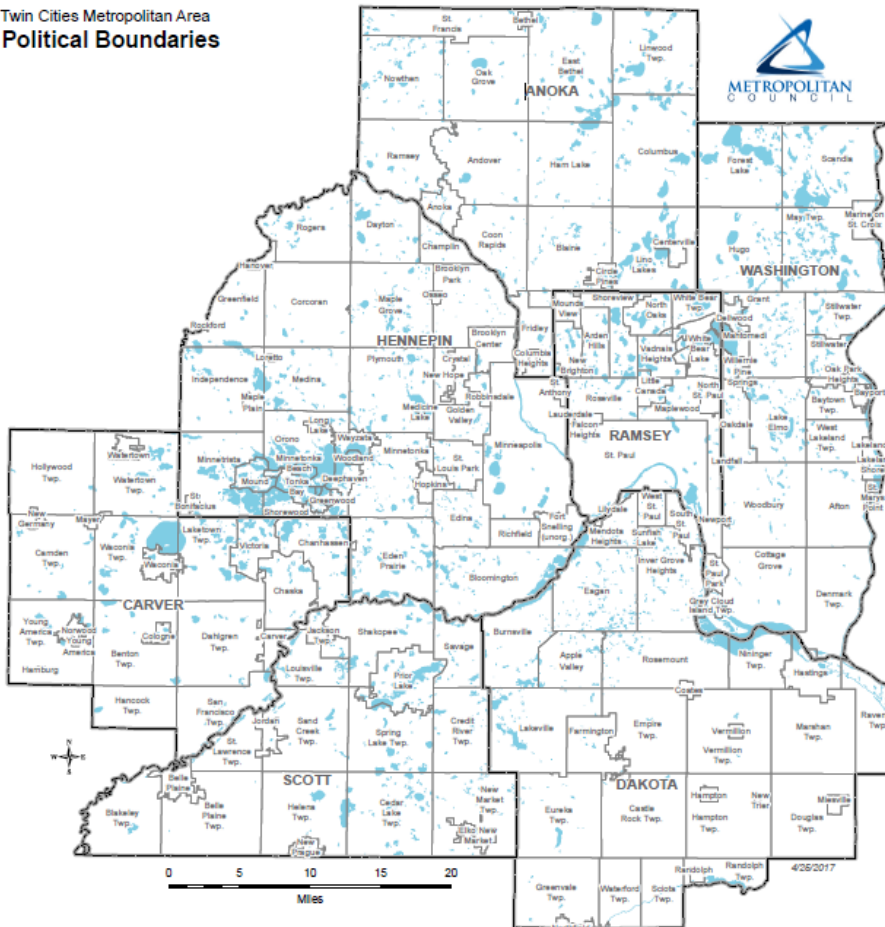
- |   |   |
|---|---|
| <span style="display:inline-block; width:15px; height:15px; background-color:yellow; border:1px solid black;"></span> Bloomington HRA     | <span style="display:inline-block; width:15px; height:15px; background-color:purple; border:1px solid black;"></span> Richfield HRA             |
| <span style="display:inline-block; width:15px; height:15px; background-color:magenta; border:1px solid black;"></span> Dakota County CDA  | <span style="display:inline-block; width:15px; height:15px; background-color:blue; border:1px solid black;"></span> Scott County HRA            |
| <span style="display:inline-block; width:15px; height:15px; background-color:lightblue; border:1px solid black;"></span> Metro HRA        | <span style="display:inline-block; width:15px; height:15px; background-color:orange; border:1px solid black;"></span> St. Louis Park HRA        |
| <span style="display:inline-block; width:15px; height:15px; background-color:lightcoral; border:1px solid black;"></span> Minneapolis PHA | <span style="display:inline-block; width:15px; height:15px; background-color:lightgreen; border:1px solid black;"></span> St. Paul PHA          |
| <span style="display:inline-block; width:15px; height:15px; background-color:lightgreen; border:1px solid black;"></span> Plymouth HRA    | <span style="display:inline-block; width:15px; height:15px; background-color:lightgreen; border:1px solid black;"></span> Washington County HRA |



HousingLink  
created 5/30/2018

# City Touch Points

Twin Cities Metropolitan Area  
Political Boundaries



- County Boundaries
- City and Township Boundaries
- Lakes and Rivers

Transportation

Sanitary Systems

Land Use

Housing

# City Touch Points - Transportation

- City Transportation Plans:
  - ▣ Utilize County Plan to identify principal and minor arterials and traffic modeling
    - Transportation Analysis Zone development coordination
  - ▣ Show future extensions of collectors
  - ▣ Show pedestrian and local bicycle network
  - ▣ Relationship with transit investment plan
  - ▣ Freight system planning
  - ▣ Airport zone planning

# City Touch Points – TAB/Met Council

- Elected City Representation – 10
  - ▣ Technical Committees – some cities serve on all 3 committees (TAC, F&P, Planning)
  - ▣ Only members of Association of Metro Municipalities (AMM) are represented on committees, plus Minneapolis and St. Paul
- Solicitations – may submit for county or state highway



# City Touch Points - Sanitary Systems

- Sanitary System Planning
  - ▣ interceptor extensions and capacity
  - ▣ wastewater flows tied to MC forecasts
- Inflow/Infiltration
- SAC (Sewer Availability Charge) Determination

# City Touch Points - Land Use

- Land Use
  - MUSA/growth management
  - Urban density targets/community designations
  - Transit Oriented Development standards
  - Mix of land use types
  - Staging of land development
  - Comp Plan Amendments tied to land use change

# City Touch Points - Housing

- Affordable Housing Scores/Allocations
  - Regional share of low- to moderate-income housing
  - Livable Communities Grants

# Township Touch Points

- Townships are unique to the county they reside in
  - ▣ Townships that do their own planning/zoning have direct interaction with Met Council
  - ▣ Townships where the county does the planning/zoning, there is little direct interaction with Met Council
- Townships with planned or developed Regional Parks

# Role of Metropolitan Council

## Strongest interactions with Counties:

- ▣ transportation
- ▣ parks and trails
- ▣ surface water mgmt.
- ▣ GIS
- ▣ future WWTP planning
- ▣ housing shelter/homeless
- ▣ Agricultural/ greenspace preservation
- ▣ rural density policies

## Strongest interactions with Cities:

- ▣ wastewater treatment
- ▣ MUSA expansions
- ▣ WAC/SAC fees
- ▣ drinking water mgmt.
- ▣ housing types /needs
- ▣ livable communities
- ▣ urban density policies
- ▣ plat monitoring

# Summary

---

- Thinking is that cities are more impacted by Met Council actions and policy-making than counties
- Reality is both cities and counties need to be represented in any future Met Council governance model
- Local elected officials work with all elements of Met Council Comprehensive Plans