



**Presentation to Metropolitan Governance  
Task Force:**

**Portland Metro Area  
Regional Growth Management**

**40 years into the experiment**

**Charles Hales | Senior Vice President, HDR**

**Former Mayor of Portland**





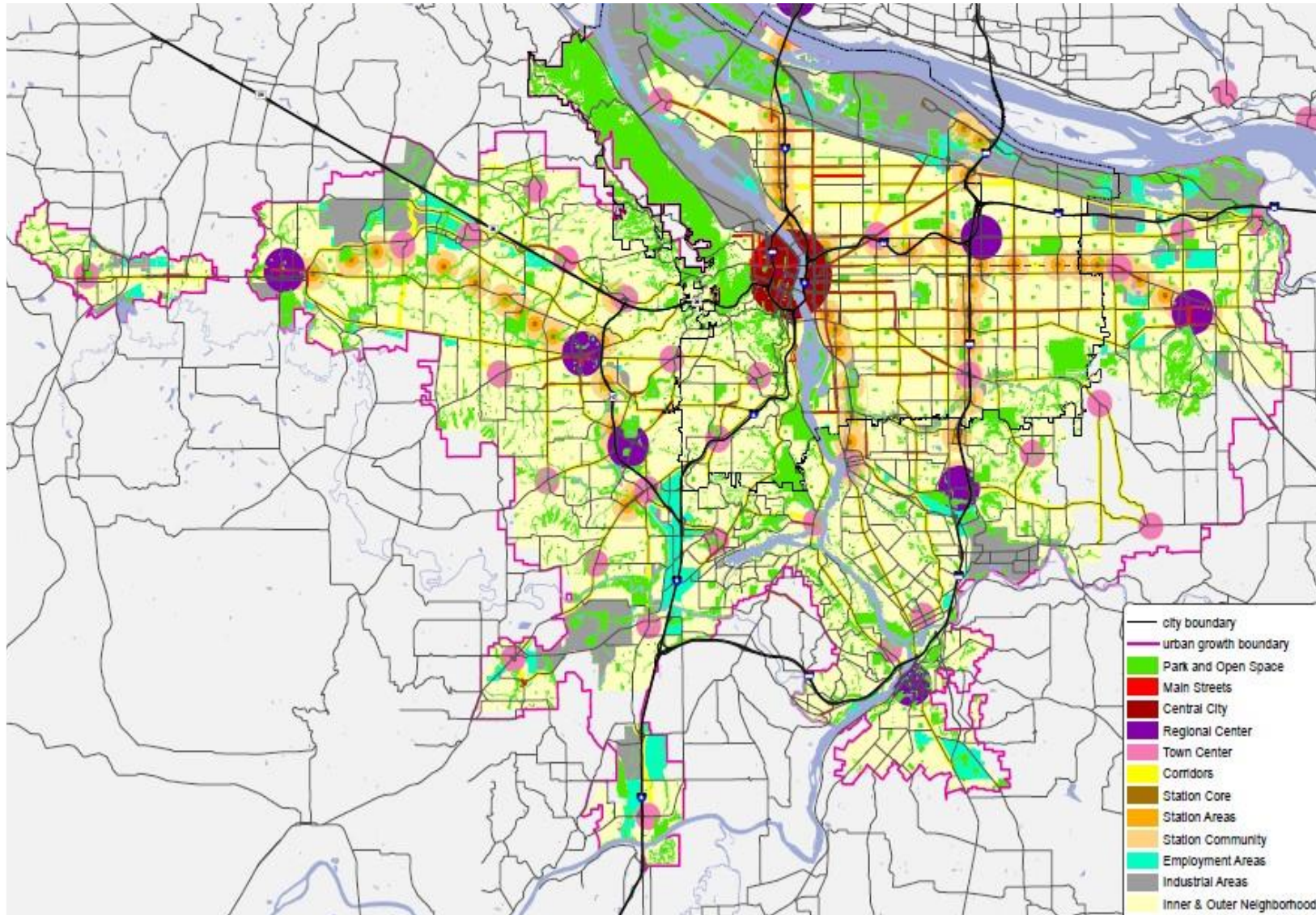
**The looming threat:  
sprawl and more  
congestion**

**The policy tools:**

**the Urban Growth  
Boundary,**

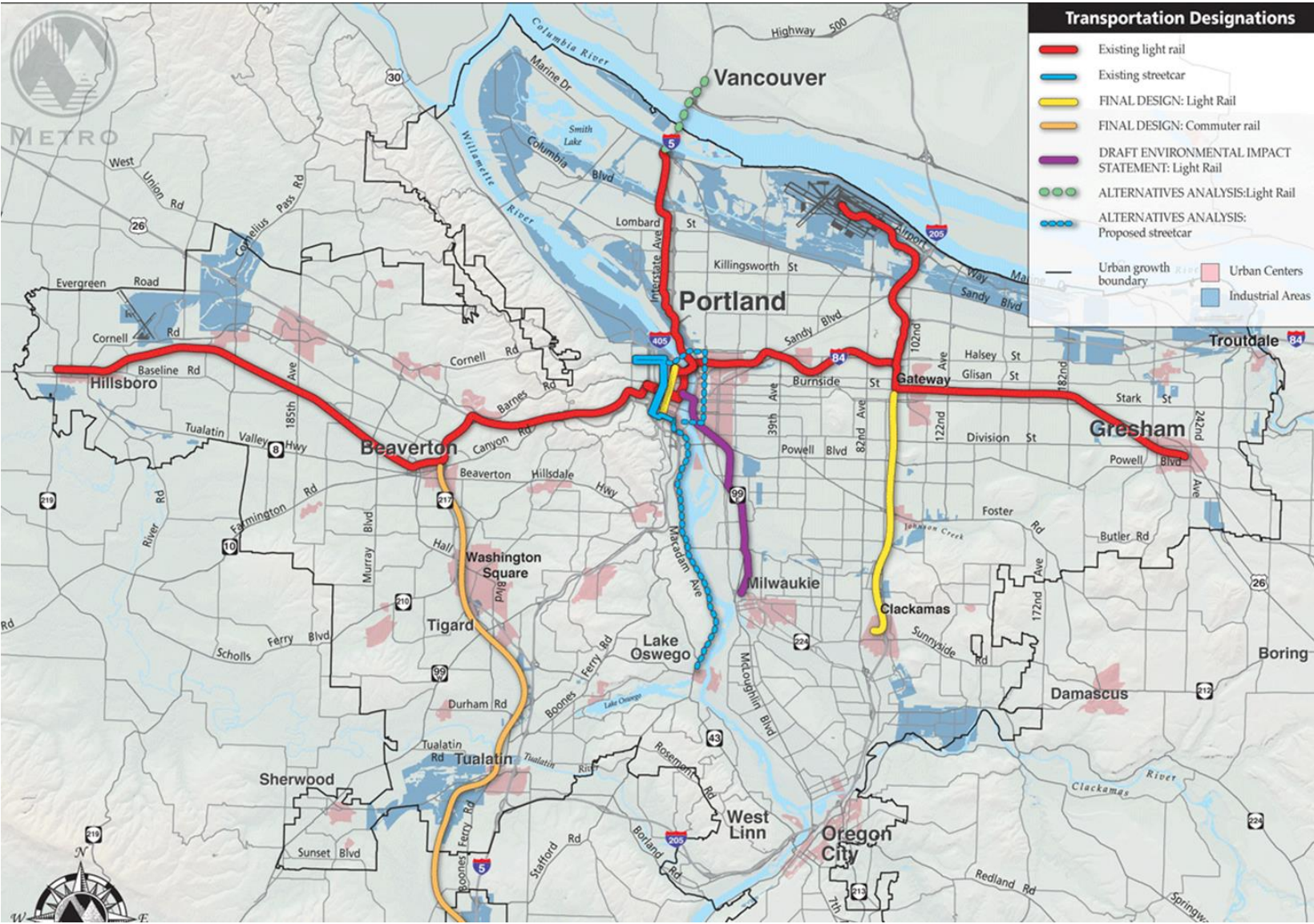
**Regional Planning,**

**and Transit**

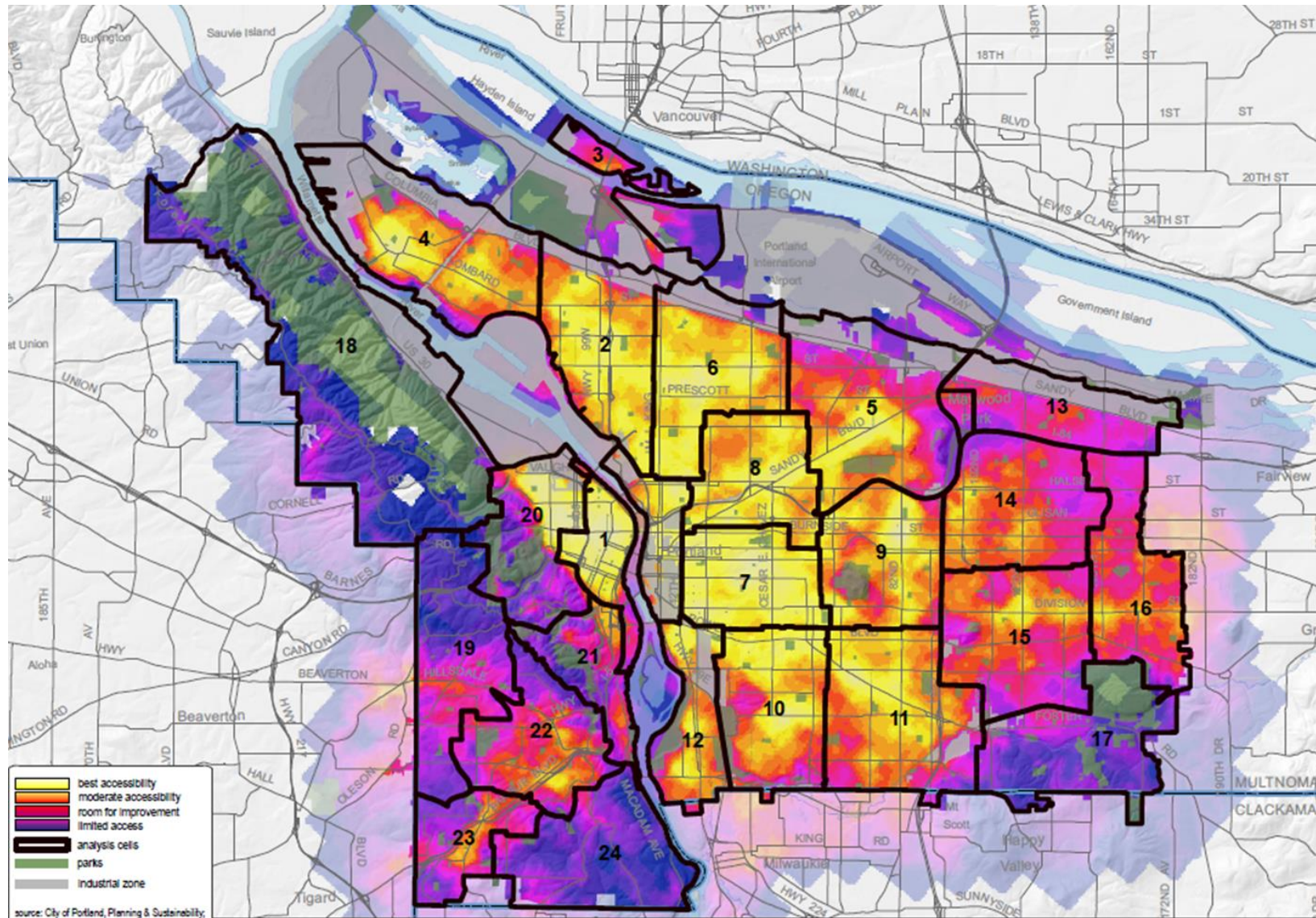


**Clear and effective Urban Growth Boundary**

**“Centers and Corridors” urban form for the region**



# Linking the Centers with Light Rail transit



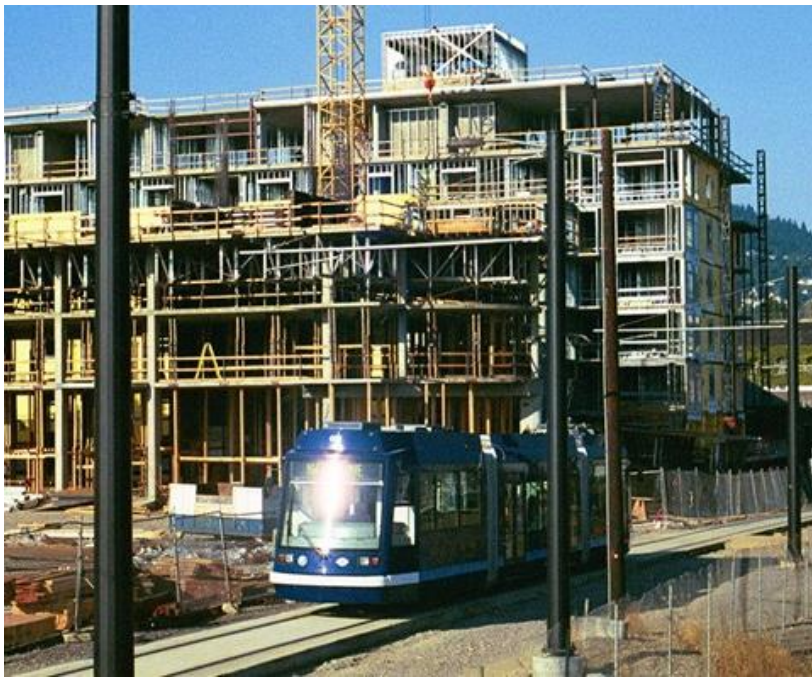
**In the core City:**

**Reinforcing  
traditional “20-  
minute  
neighborhood”  
patterns**

**Taking a larger  
share of  
regional growth**



**Emphasis on redevelopment and filling in empty sites**



**Intensive TOD  
development in  
targeted core  
areas,  
supported by  
local transit  
circulation**





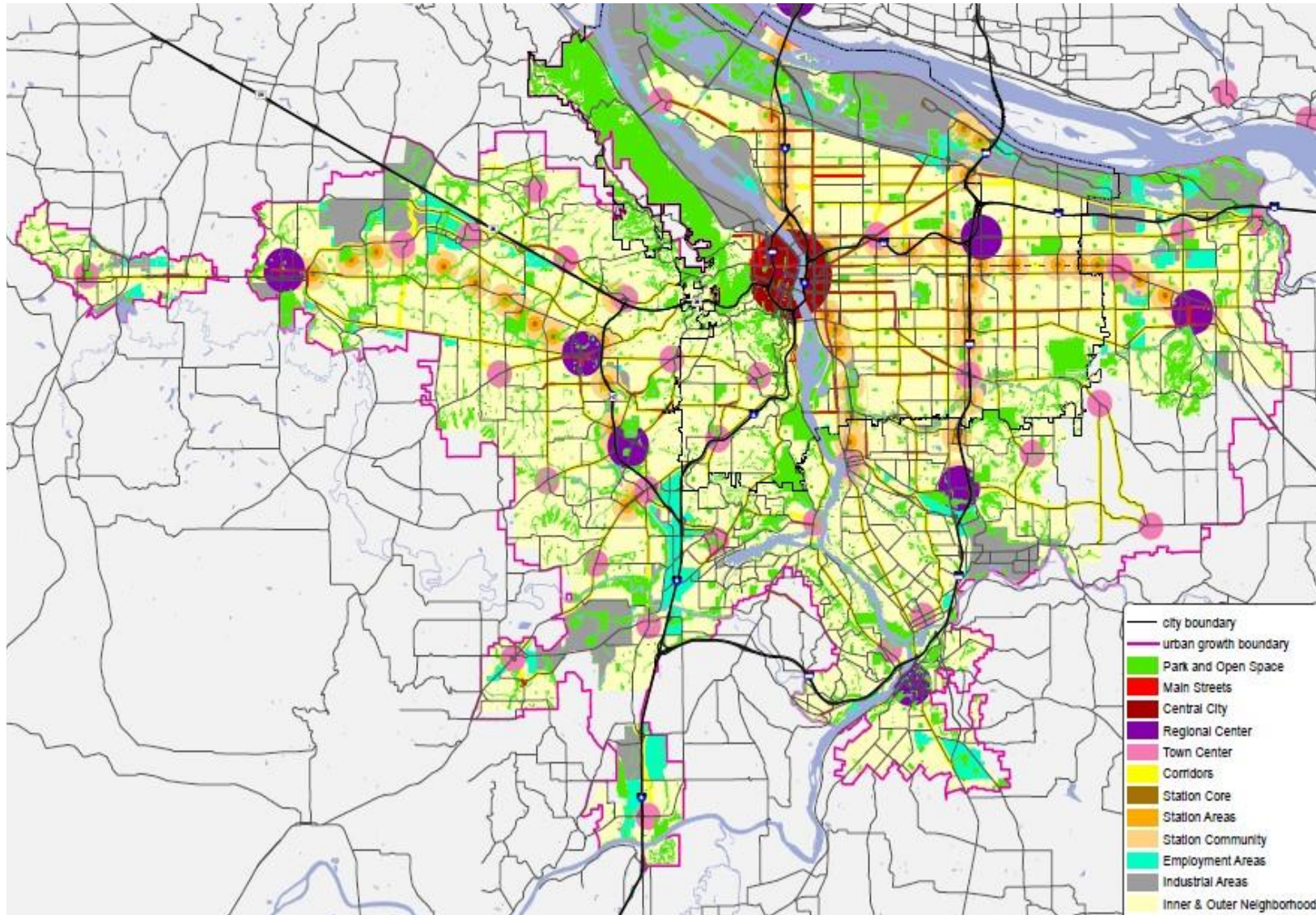




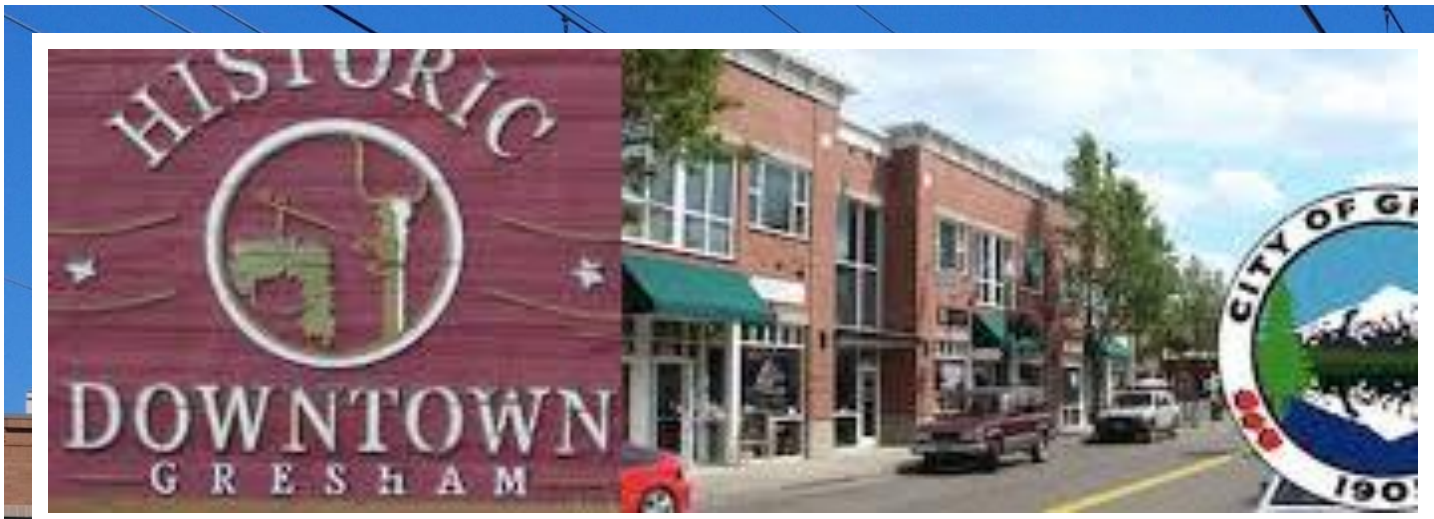
## **TOD Corridors as a city-wide strategy**







**Benefits not just for the Core City, but for smaller Regional Centers and Town Centers as well**



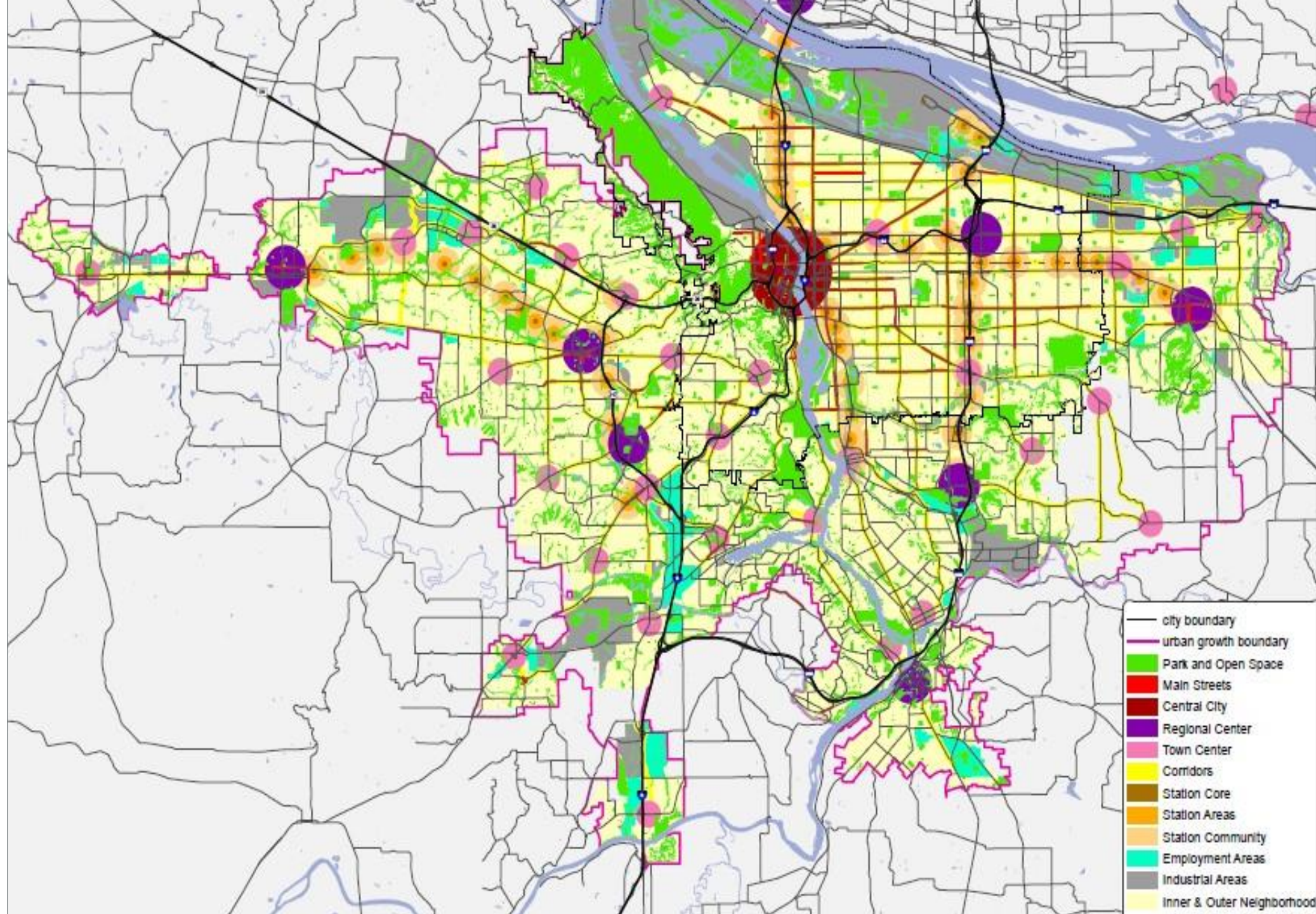


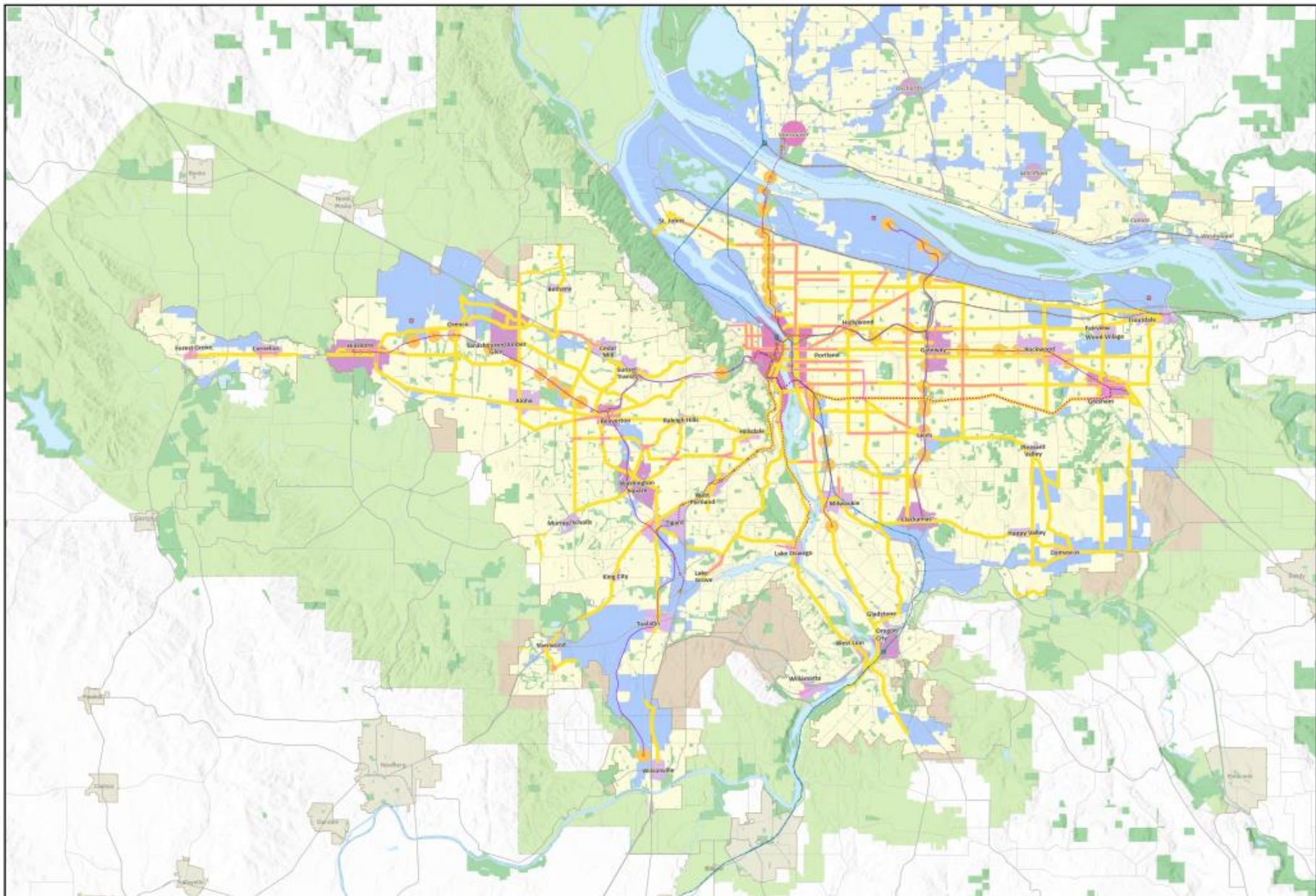












## 2040 Growth Concept Map

May 2023



Metro cannot accept any responsibility for errors, omissions, or positional accuracy. There are no warranties, expressed or implied, including the warranty of merchantability or fitness for a particular purpose, accompanying this product.

The Metro 2040 Growth Concept defines the form of regional growth and development for the Portland metropolitan region. The Growth Concept was adopted in December 1995 through the Region 2040 planning and public involvement process. This concept is intended to provide long-term growth management of the region.

The map highlights elements of parallel planning efforts including the 2018 Regional Transportation Plan that outlines investments in multiple modes of transportation, and a commitment to local policies and investments that will help the region better accommodate growth within its centers, corridors and employment areas.

- Central city
- Regional center
- Town center
- Station communities
- Main streets
- Corridors
- Employment land
- Parks and natural areas
- Neighborhood
- Rural reserve
- Urban reserve
- Urban growth boundaries
- Existing high capacity transit
- - - Planned high capacity transit
- - - - Proposed high capacity transit tier 1
- - - - - Mainline freight
- High speed rail (proposed)
- - - County boundaries
- Neighboring cities
- Airports
- Intercity rail terminal



For more information on these initiatives, visit <http://www.oregonmetro.gov/2040>

