

Family Engagement



Northfield Public Schools Attendance Project

Role

How is the Family Engagement Navigator Role different from School Staff?

- Go out into communities
 - In their Neighborhood/Home
 - Connecting with Caregivers and kids
- School Applications
 - Show how it works
 - Encourage Staff/Caregivers to use it
 - Mutual between Caregivers and School staff
- Connect to resources
 - Community Action Center, Healthfinders, Public Health, etc.
- We are a trusted resources

Barriers

Barriers for Families

- One car per Family or no car at all
- No SSN
- No medical insurance
- New to country families
- Lack of academic performance for students
- Aren't aware of how school can help
- Lack of information about how to help their child (support group)

FEN Evaluation Data

25%

Reduction in number of students meeting the threshold for Chronic Absenteeism

75%

Of student in the cohort improved their rate of attendance year over year

Data Gathering - Plan Outcomes

Data Review

- FEN evaluation data
- Carleton Statistics Research Group
- MnMTSS team data reviews
- Family focus meetings

Learnings

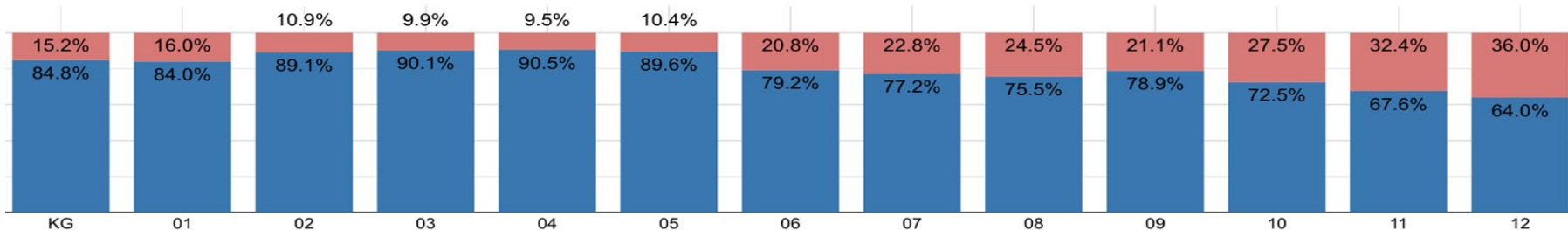
- Families need help
- Families need information
- Our FEN model is effective
- We are lacking in secondary

Plan

- Secondary Attendance Navigator
 - ◆ Home Visits
 - ◆ Parent Groups
 - ◆ Student Groups
- SPACE: Supporting Parenting for Anxious Childhood Emotions training for SWs and SBMH
- Cascade and intentional communication push

19%

met the definition of a chronically absent student at the end of the 2024 school year



Students who are chronically absent are more likely to be:

- Students of color
- Multilingual learners
- In Kindergarten or first grade OR post 16+ yrs old
- Low income students (but NOT like we thought!!)

Attendance - Chronic Absenteeism

- **Chronic Absenteeism** means being absent from school 10% or more of the school days.
- That means that if students miss as few as 2 days of school a month for *any reason* - (except school field trips), they will be **chronically absent from school** .
- So far this year, we have had 142 days of school - so **students who have missed 14 days of school all year** would be chronically absent.
- Why is just 2 days of school a month a problem? Because a lot of very good research shows that **students have a harder time learning skills like reading and math, and how to be a great student** when they miss school only that much.

Chronic Absence Impact on Engagement

Secondary students who are chronically absent are 10% less likely to report that teachers care about them

