



# Minnesota Department of Children, Youth and Families: UPDATE

Bharti Wahi | Interim Assistant Commissioner Child Safety and Permanency

# Focus for the Department of Children, Youth, and Families

- **Principles:**

- Whole family focus
- Focus on a child throughout their life, from intentional prevention to downstream services
- Aligning early childhood programs
- Services are easy to access and navigate (“front door”)
- Cross-agency coordination will still be needed (one agency can’t do everything)
- Improved and more equitable outcomes achieved for all races, incomes, economic statuses and places of being

## **Core programs proposed to move into the new agency:**

- ❖ Child care and early learning programs
- ❖ Child Support, Child Safety and Permanency, and other family-focused community programs
- ❖ Economic support and food assistance programs
- ❖ Youth opportunity and older youth investments

# Programs to Transfer

## **Children and Family Services at the Department of Human Services:**

- Management Operations and Business Integration
- Child Care Services
- Child Safety and Permanency
- Child Support
- Economic Assistance and Employment Supports Division
- Office of Economic Opportunity

## **Office of Inspector General & Department of Human Services Operations**

- Licensing functions for family child care, child care centers, certificated child care centers, and child foster care.
- Program integrity units for related Child and Family Service (CFS) programs
- DHS Central Operations functions - Human Resources, Finance, General Counsel, Compliance, and Management Services, etc.

## **Programs from the Office of Teaching and Learning at the Department of Education**

- Early Learning Services division (except Part B 619)
- After-School Community Learning Grant Program

## **Programs from the Department of Public Safety:**

- Juvenile Justice Advisory Committee
- Youth Intervention Program grant
- Youth Justice Office
- Office of Restorative Practices

## **Program from the Child and Family Health Division at Minnesota Department of Health:**

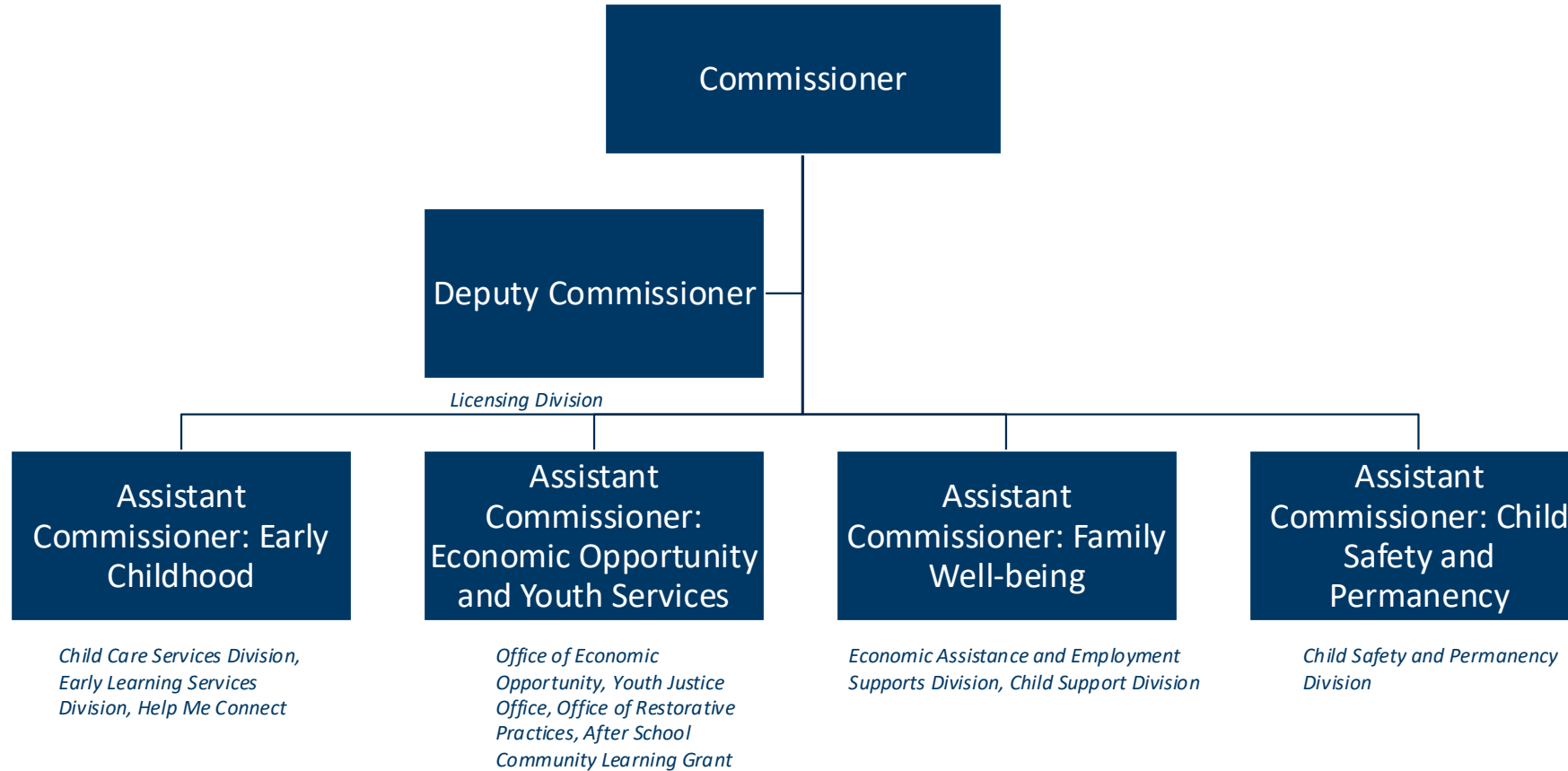
- Help Me Connect

# High-level Planned Org Structure

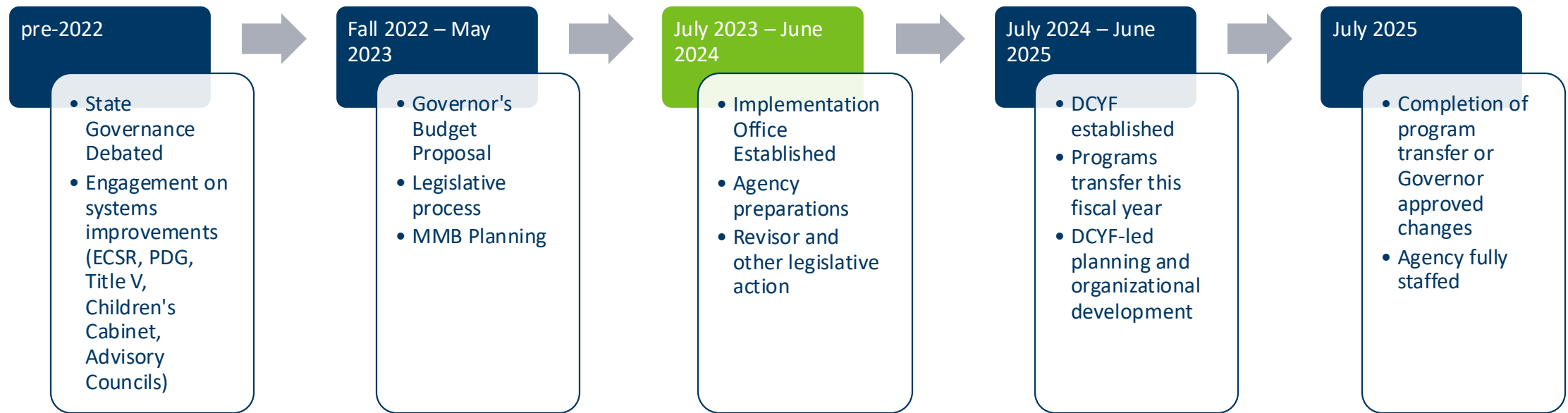
The engagement process and resulting themes led to the development of a high-level org structure for the new Department of Children, Youth, and Families. This high-level structure includes:

- Youth Services and Prevention
  - *Youth Justice Office, Office of Restorative Practices, Office of Economic Opportunity, After School Community Learning Grant*
- Family Well-Being
  - *Economic Assistance and Employment Supports Division, Child Support*
- Early Childhood
  - *Child Care Services, Early Learning Services, Help Me Connect*
- Child Safety and Permanency
  - *Child Safety and Permanency*
- Leaders in coordination around mental health, children with disabilities, Black children and youth, and family and community navigation of state programs.
- Equity Office
- Tribal Policy Office
- Office of Innovation
  - *Data, evaluation, research, strategic planning, integration of work, collaboration and coordination across the agency*
- Operations, including, but not limited to:
  - *Budget and Finance, Communications, Compliance, External Relations (including county and community relations), Legislative Relations, Human Resources, Information Technology, Legal, Licensing, Program Integrity*

# DCYF High Level Org Chart



# DCYF: Phases



System transformation

Interagency partnerships

Engagement and partnership – cross-sector

# Role of DCYF on the Issue of Truancy

- State law mandates a child protection response to educational neglect which is tied to truancy
- DHS/DCYFDHS/DCYF has engaged with various community partners, including counties and Tribes, on this issue and is a significant concern.
- October 7<sup>th</sup> meeting – DCYF staff will dig deeper on this issue.
  - Statutes related to child protection response to educational neglect
  - DHS/DCYF provided technical assistance on proposed past legislative language on this issue

# Questions? Thank You!

Bharti Wahi | [Bharti.wahi@state.mn.us](mailto:Bharti.wahi@state.mn.us)